

Saturday, November 13, 2010  
4:55 PM

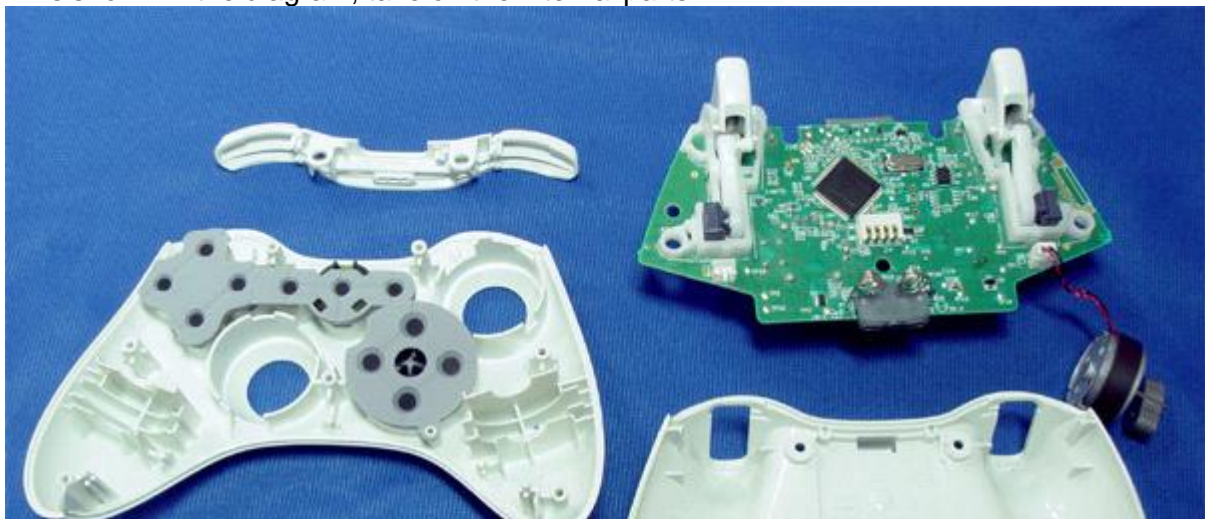
How to install the XCM controller shell to new version of 360 wireless controller (Picture 1-5)

Page [1](#), [2](#), [3](#)

1. As shown in the diagram, take off the battery pack and using the XCM screw driver to take off the 7 screws as indicated.



2. As shown in the diagram, take off the internal parts.





3.As shown in the diagram, take off these 2 screws.



4.Insert the screw driver into the holes then press.



5.Remove the rubbers and the buttons as shown in the picture.

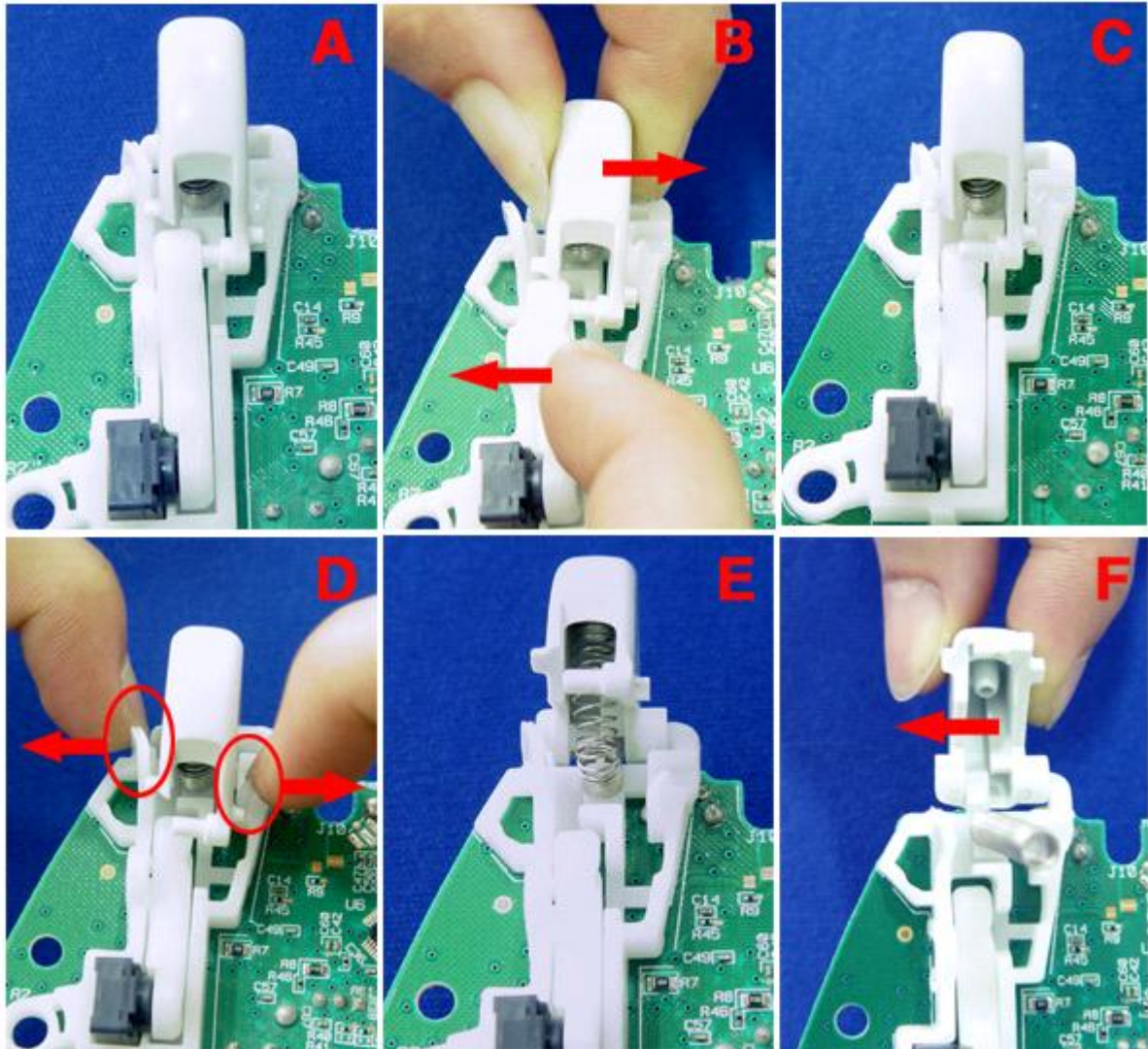


Pasted from <[http://www.xcm.cc/install\\_the\\_xcm\\_controller\\_shell\\_to\\_new\\_360\\_wireless\\_controller\\_shell.htm](http://www.xcm.cc/install_the_xcm_controller_shell_to_new_360_wireless_controller_shell.htm)>

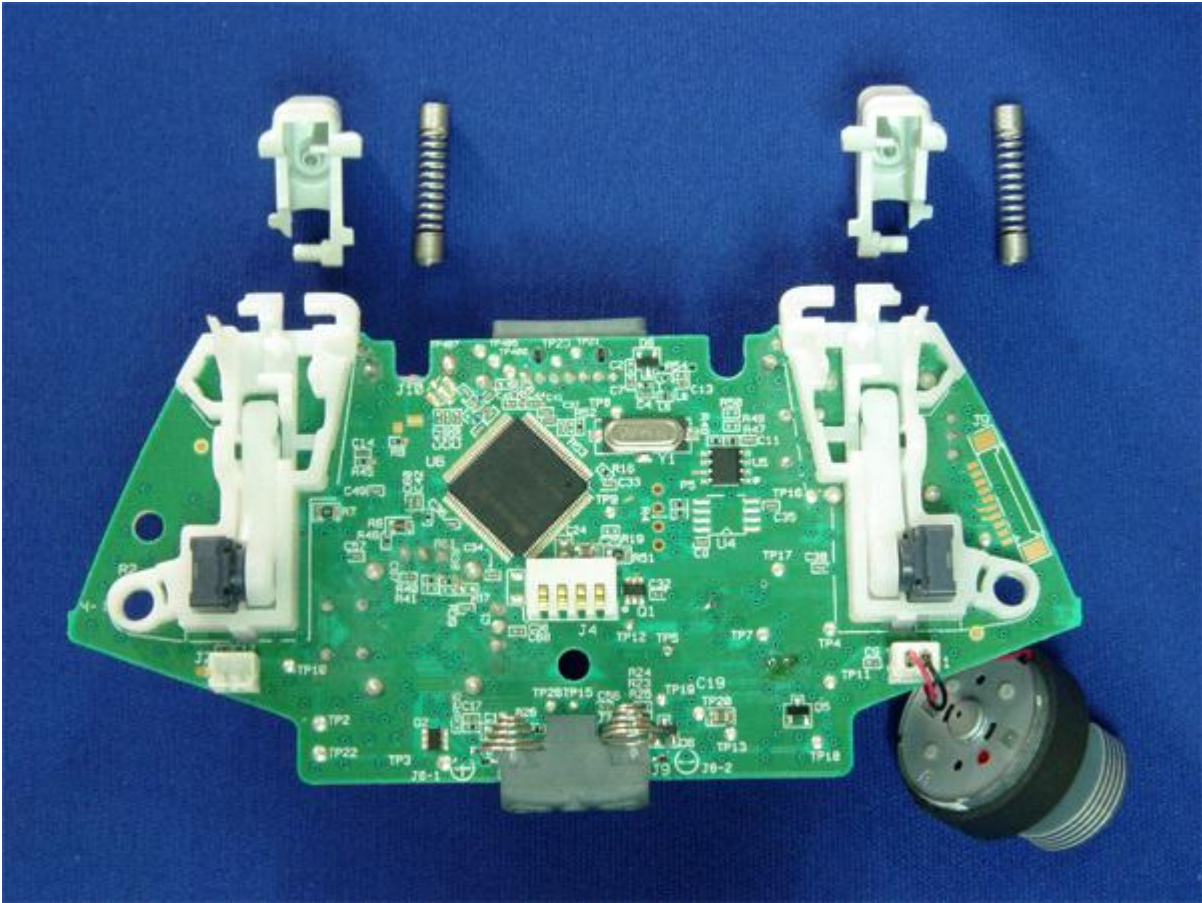
How to install the XCM controller shell to new version of 360 wireless controller (Picture 6-10)

Page [1](#), [2](#), [3](#)

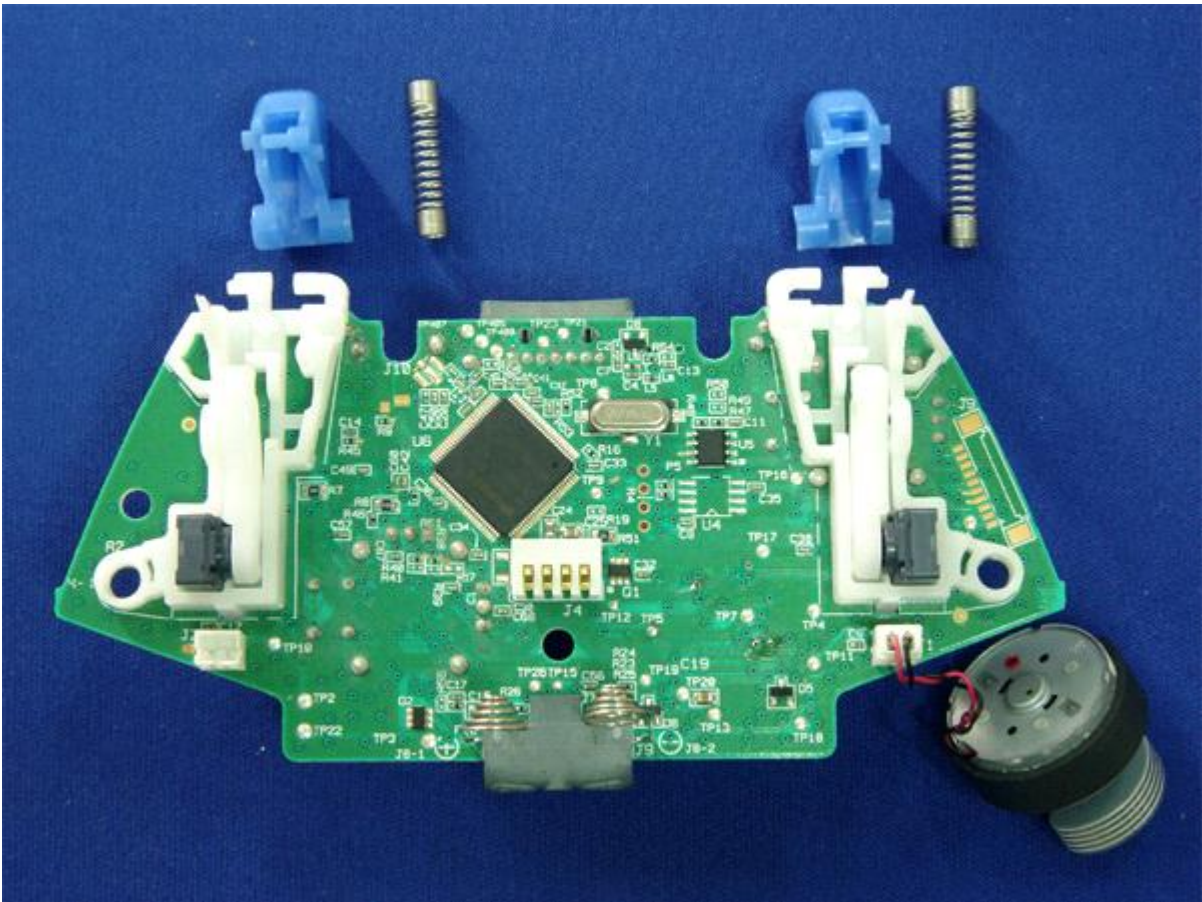
6.As shown in the diagram,remove the RT ,LT buttons.



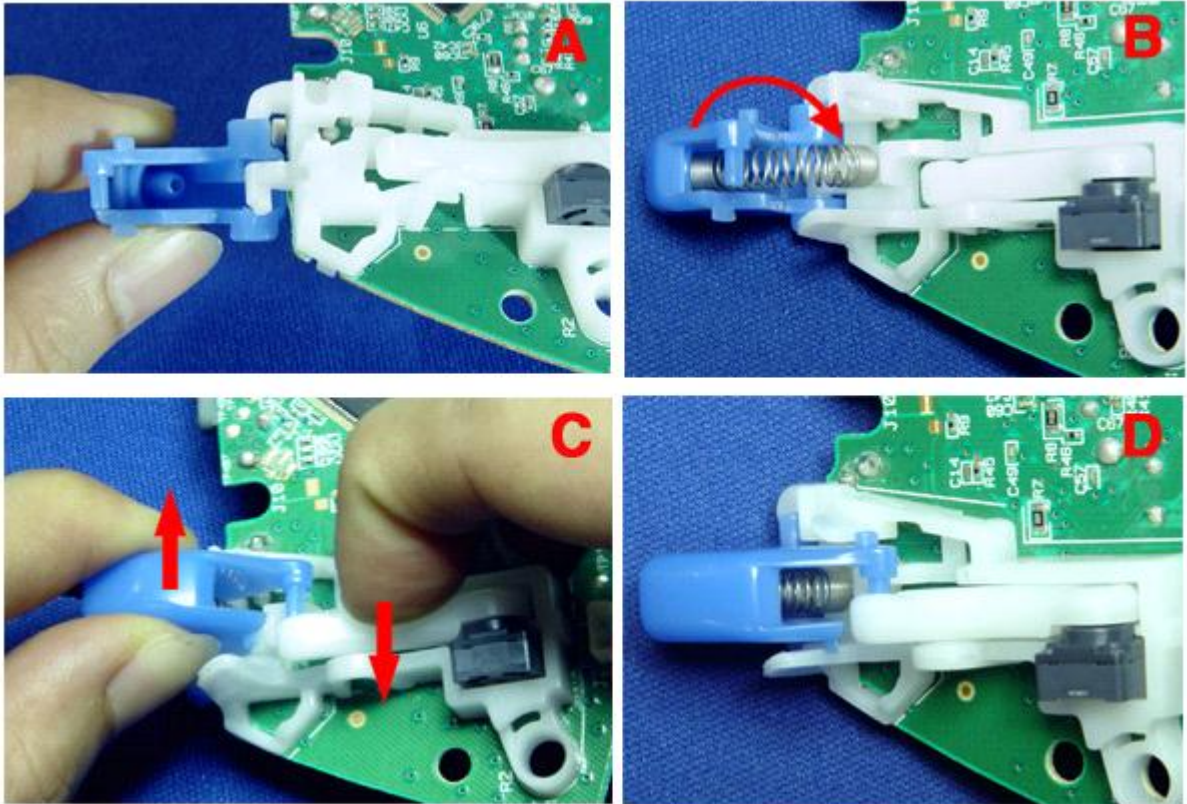
7.Disassemble is completed.



8.XCM RT and LT buttons.



9.As shown in the diagram, install the RT and LT buttons step by step.



10. Screw the direction button back to the shell, place the rubber on.

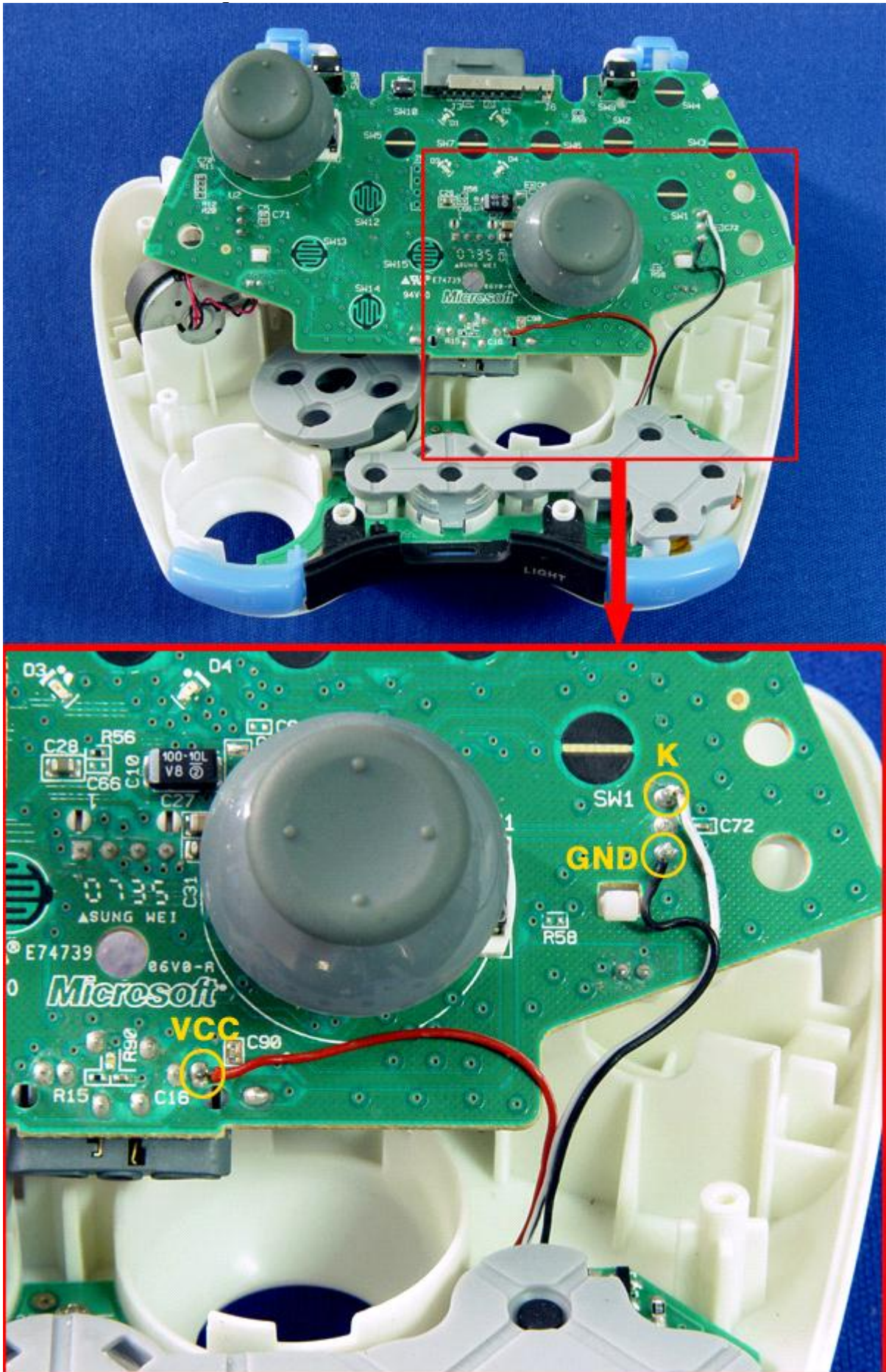


Pasted from <[http://www.xcm.cc/install\\_the\\_xcm\\_controller\\_shell\\_to\\_new\\_360\\_wireless\\_controller\\_shell.2.htm](http://www.xcm.cc/install_the_xcm_controller_shell_to_new_360_wireless_controller_shell.2.htm)>

How to install the XCM controller shell to new version of 360 wireless controller (Picture 11-15)

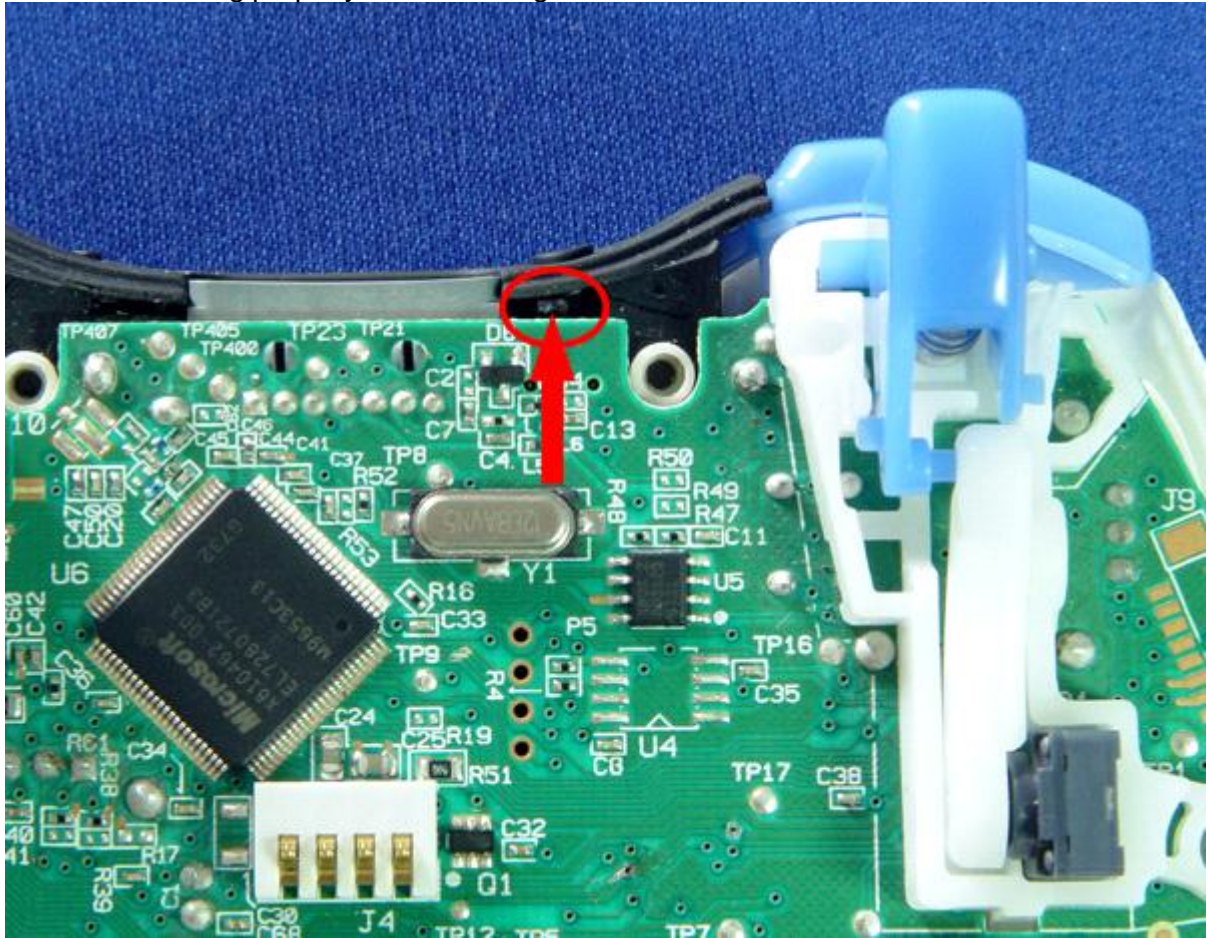
Page [1](#), [2](#), [3](#)

11.As shown in the diagram, solder these 3 wires.



12.As shown in the diagram, push the back of on-live button close to this point, make sure

the button working properly before closing the controller bot.



13. Close the controller bottom, put on the 7 screws then cover the battery pack back to the place.



14. Installation complete.



15. LED light button (on/off the LED light)



Pasted from <[http://www.xcm.cc/install\\_the\\_xcm\\_controller\\_shell\\_to\\_new\\_360\\_wireless\\_controller\\_shell.3.htm](http://www.xcm.cc/install_the_xcm_controller_shell_to_new_360_wireless_controller_shell.3.htm)>