

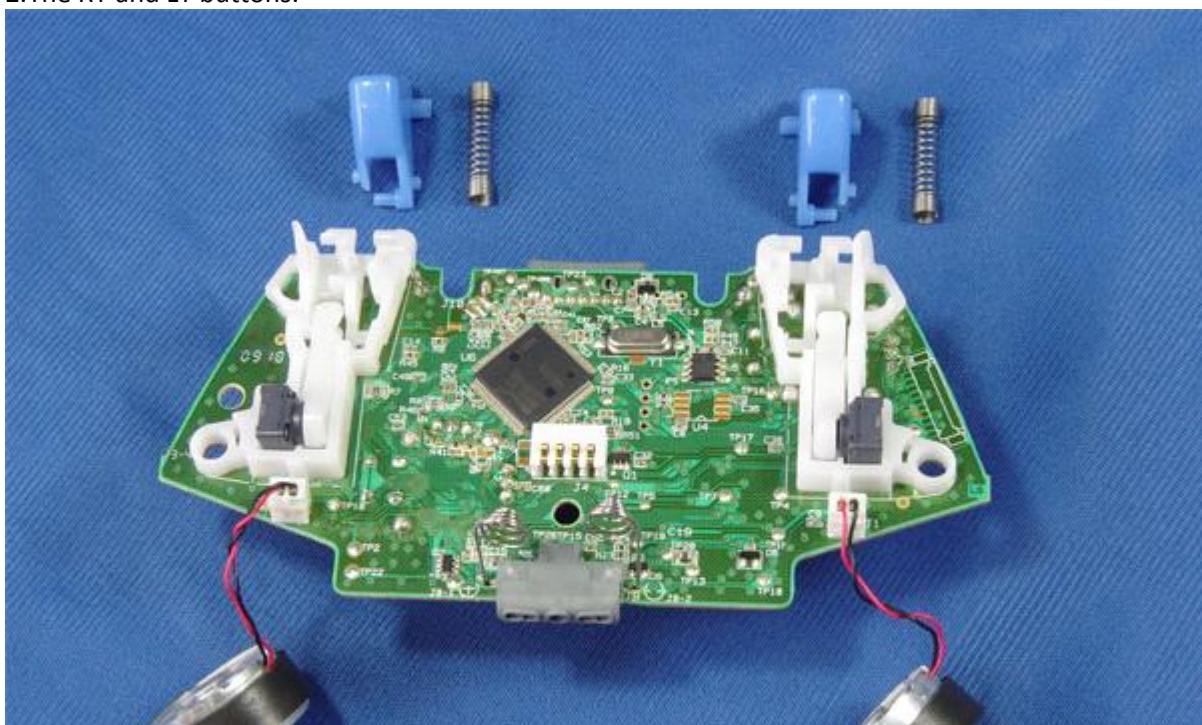
XCM Shell With LED Thumbsticks Guide

Tuesday, November 02, 2010
8:06 AM

Wireless shell with LED analog stick_installation.1
1.installation parts.

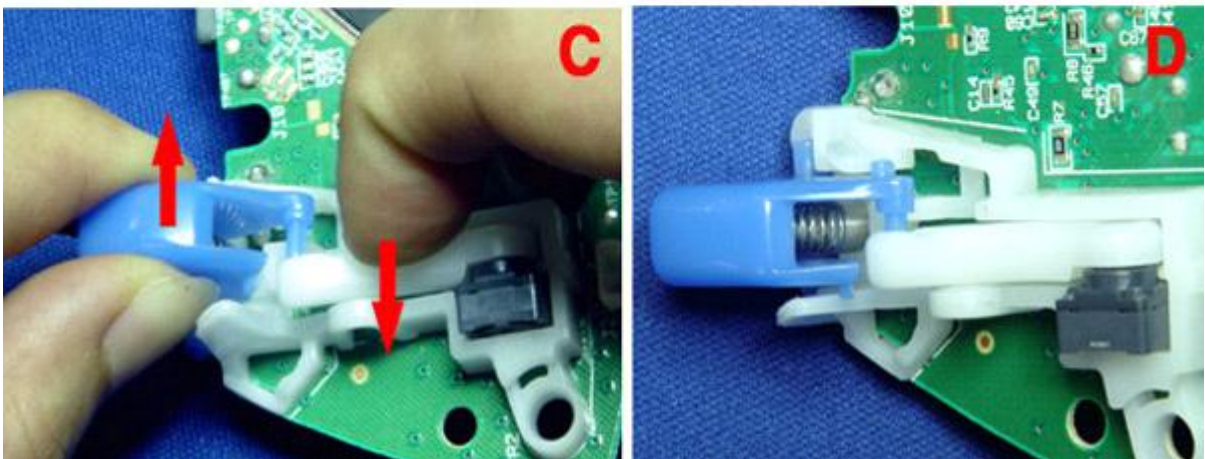
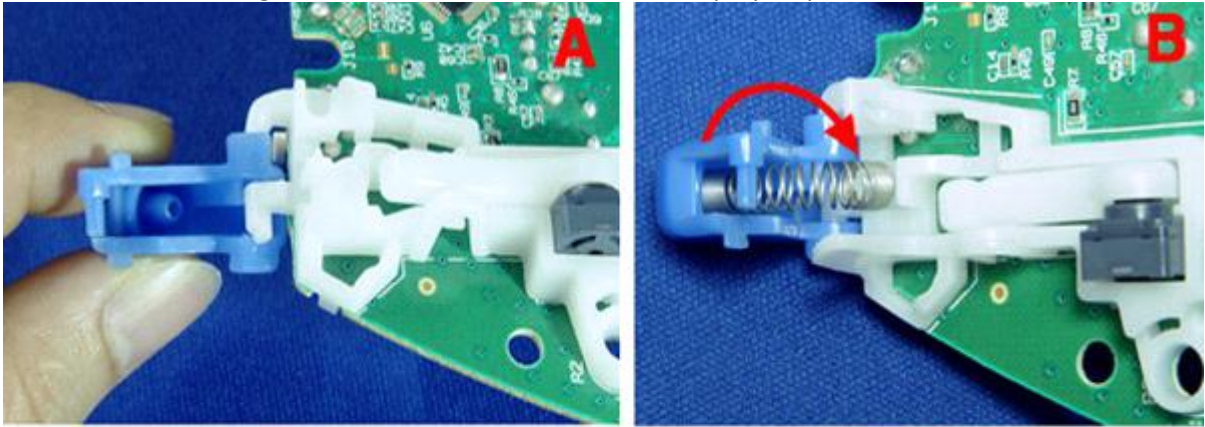


2.The RT and LT buttons.

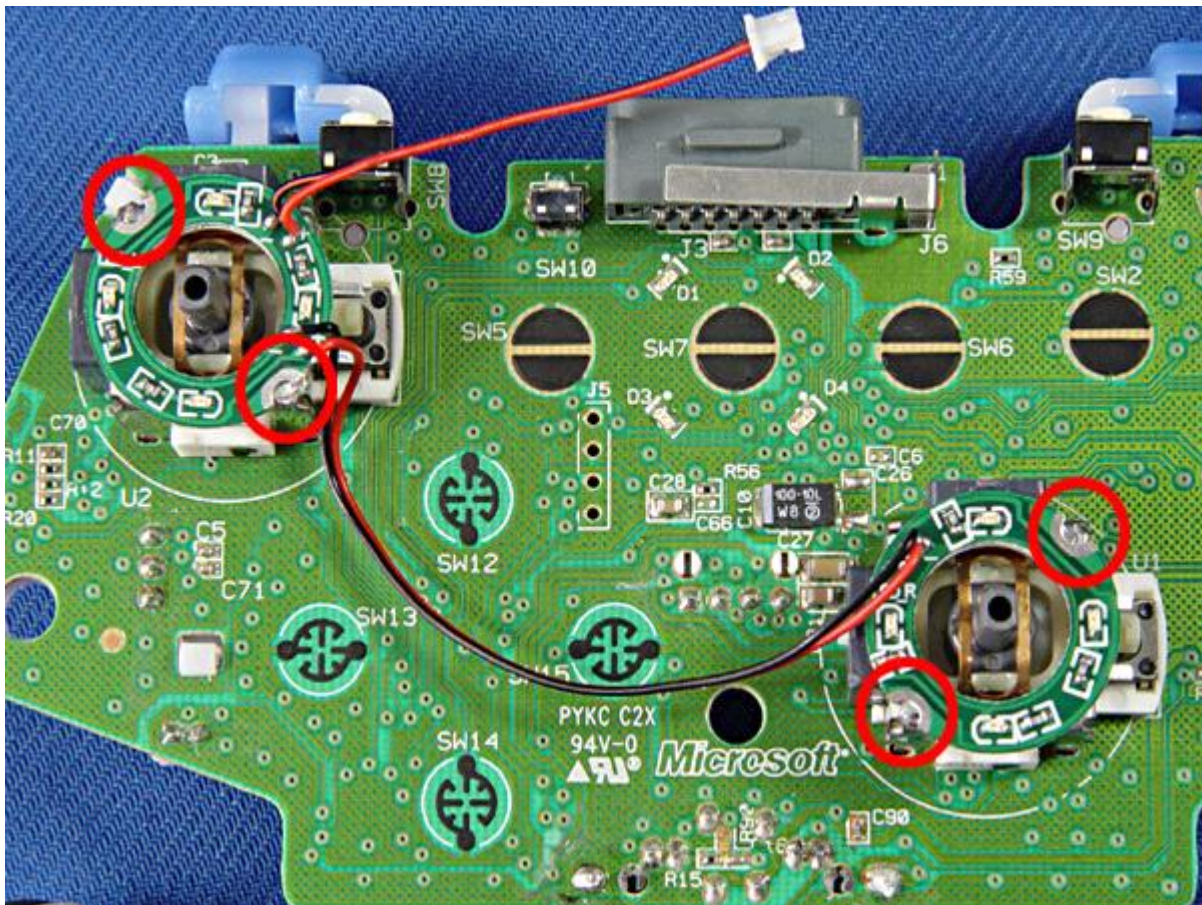




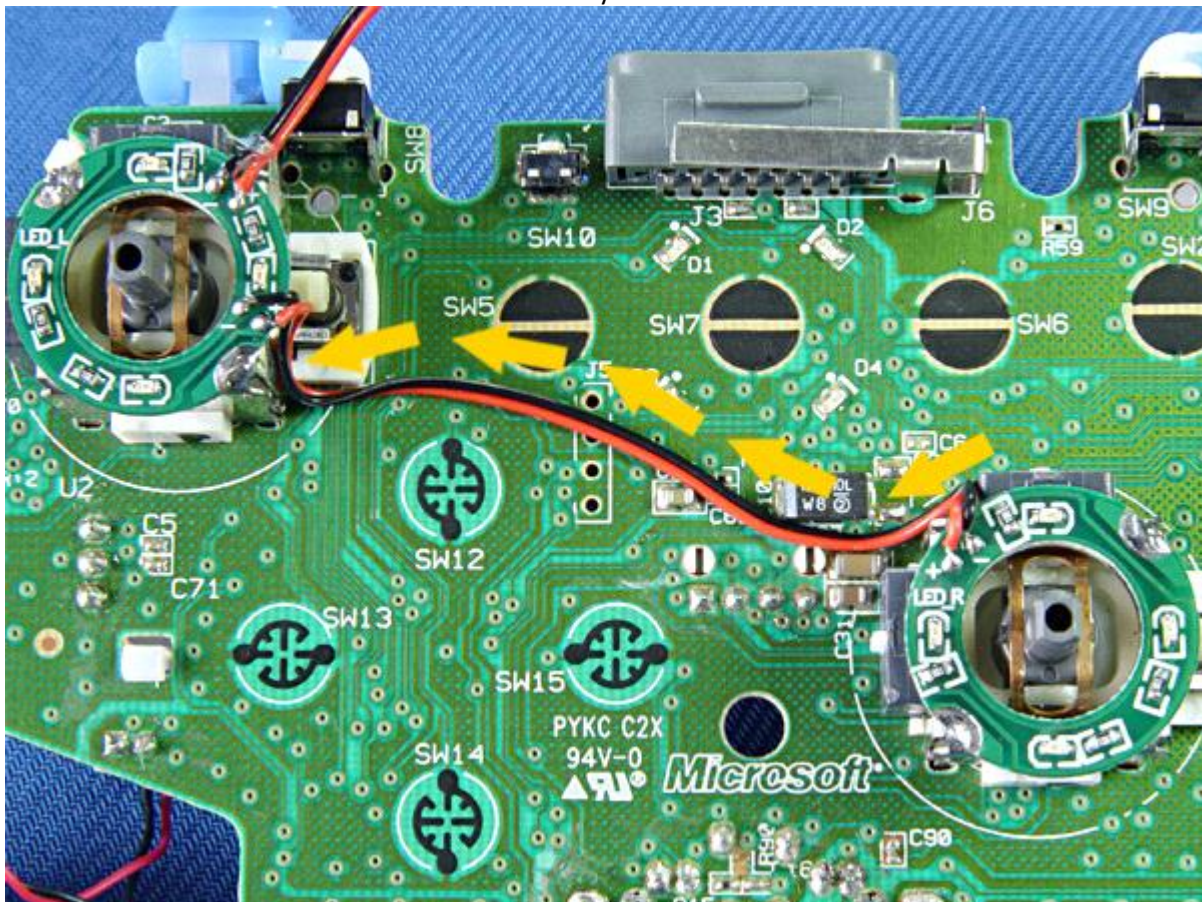
3.As shown in the diagram, install the RT and LT buttons step by step.



4.Remove the double-side tape.



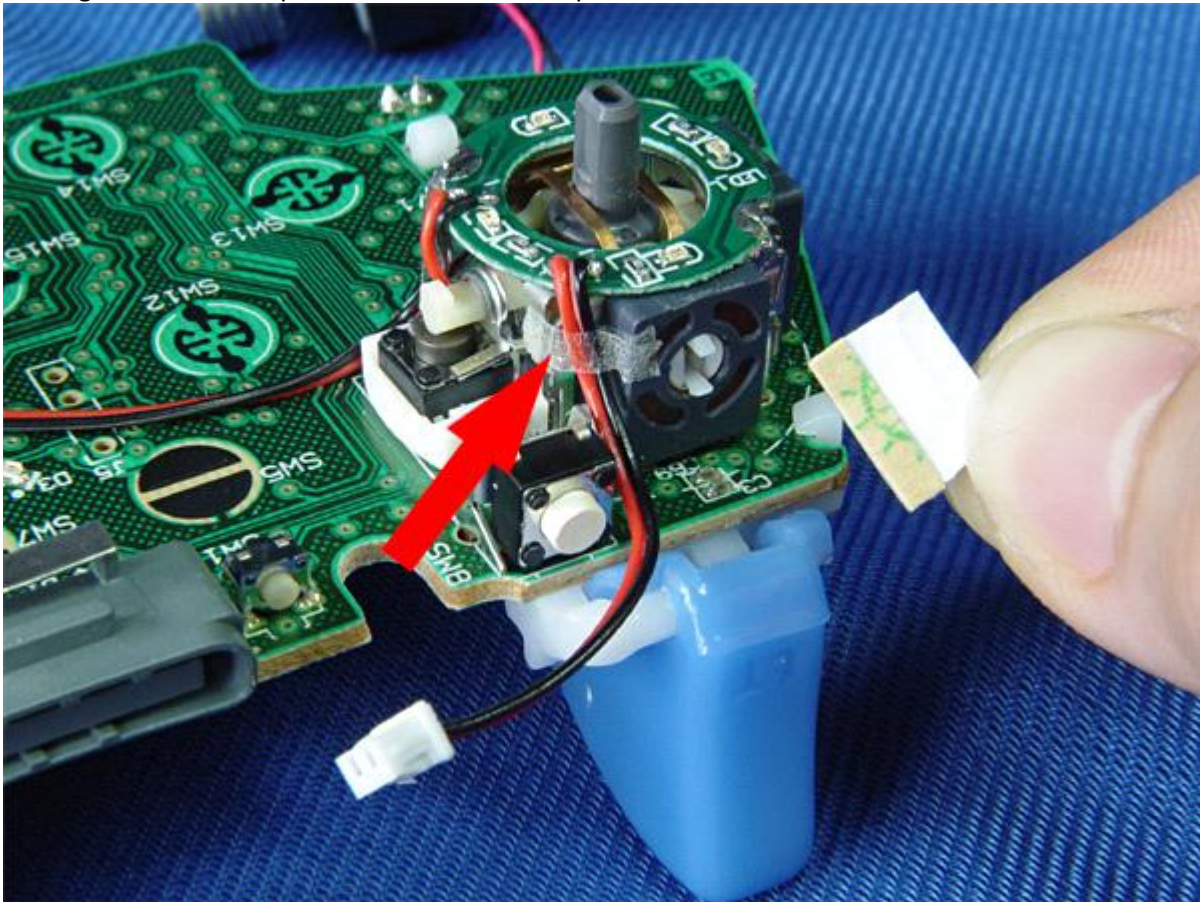
7. Follow the direction of the arrow indicated to lay down the wires.



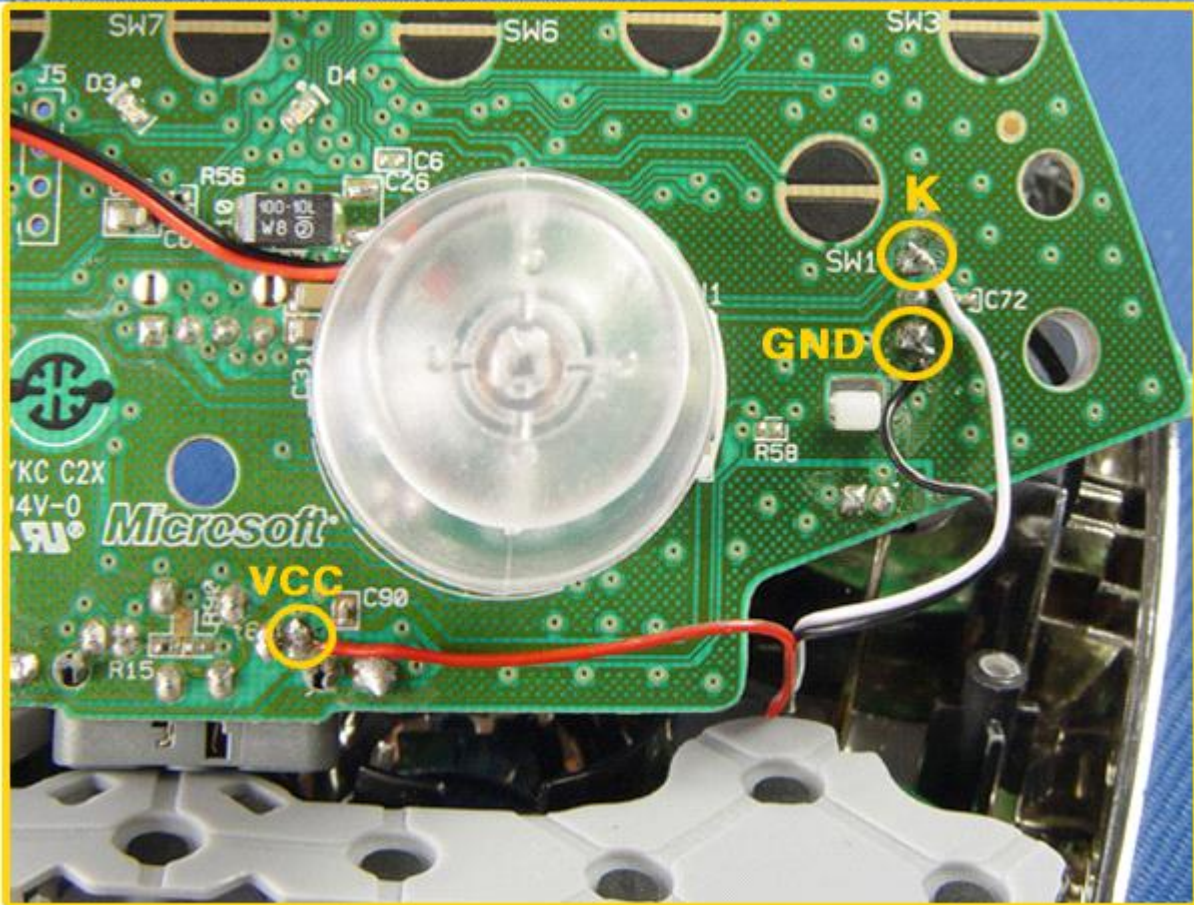
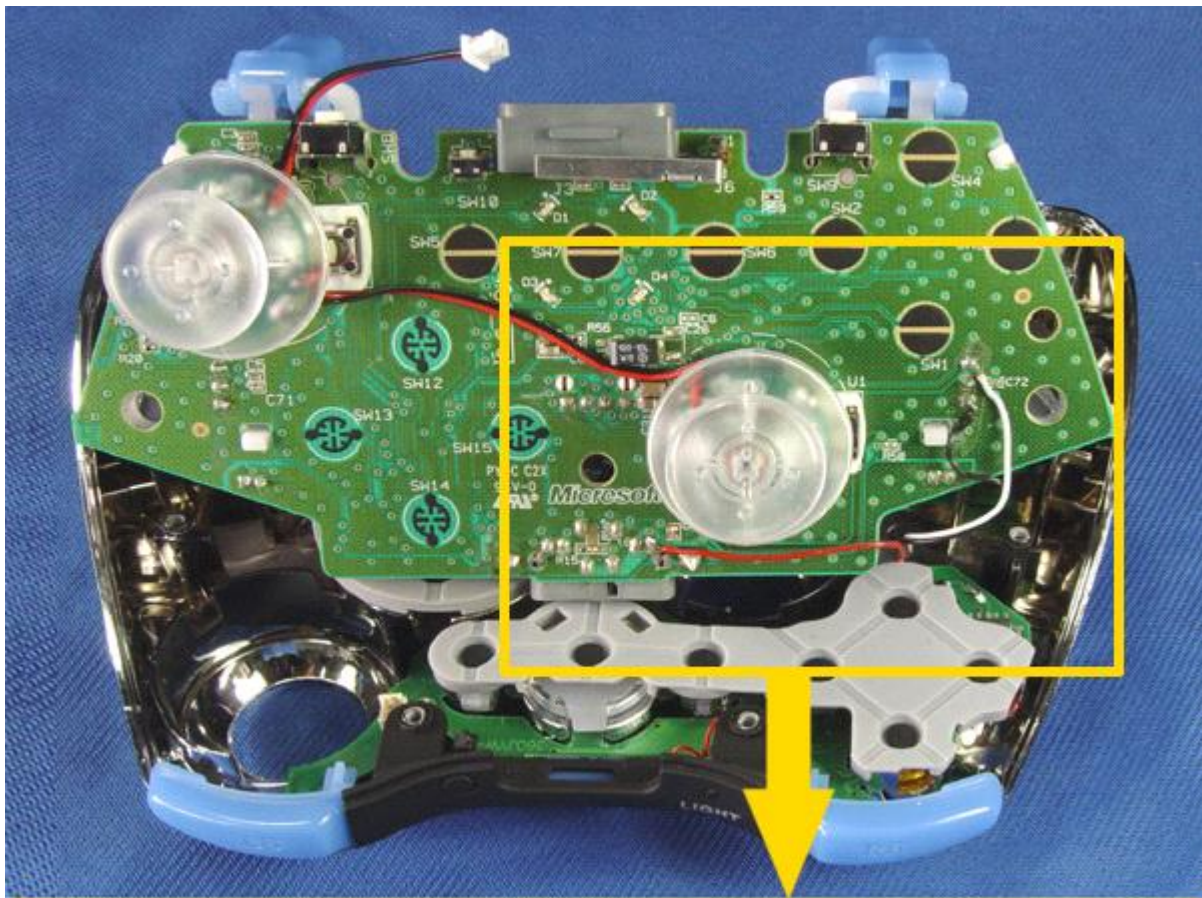
Pasted from <http://www.xcm.cc/wireless_shell_with_led_analog_stick_installation.htm>

Wireless shell with LED analog stick_installation.2

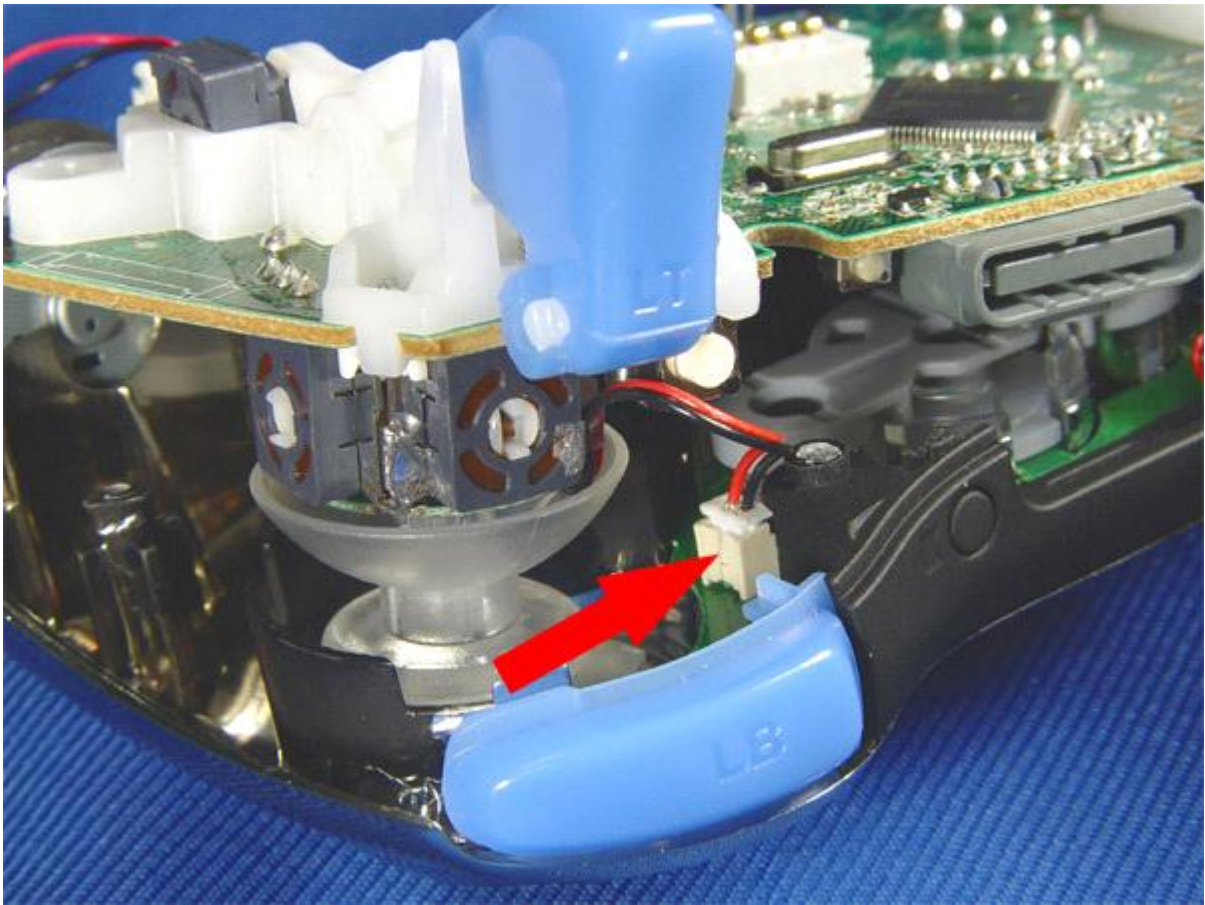
8.Using the adhesive tape stick the cable to this position.



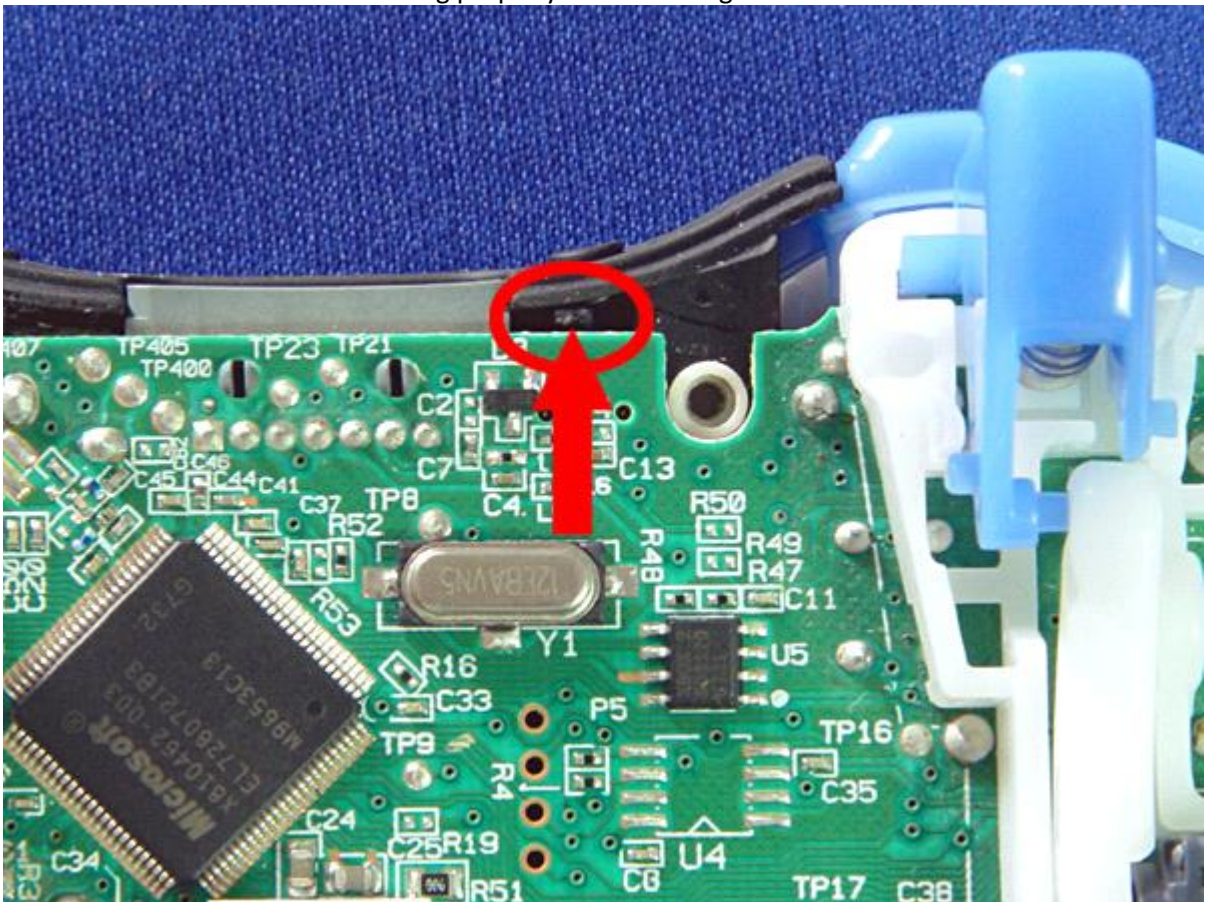
9.As shown in the photo, soldering this 2 wires.



10. Plug the power cord to this socket.

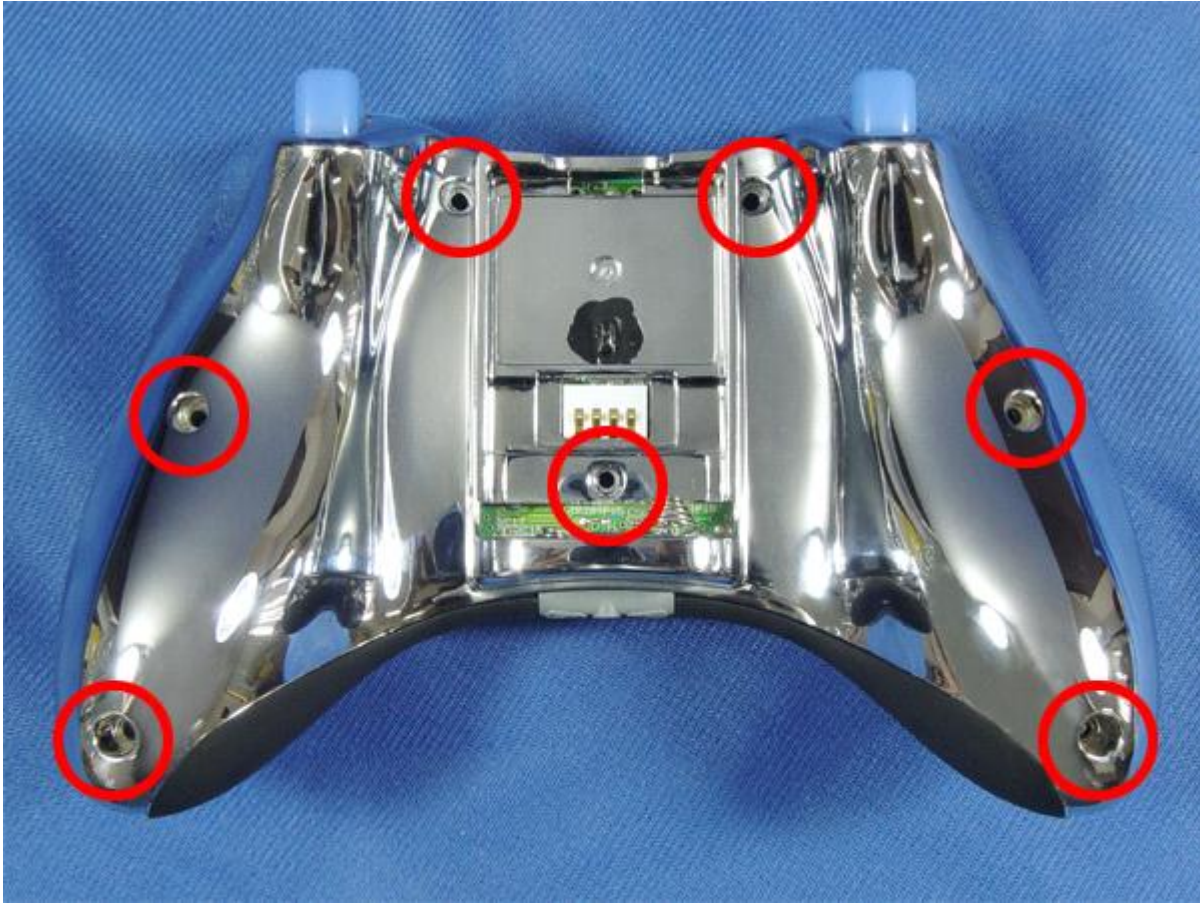


11. As shown in the diagram, push the back of on-live button close to this point, make sure the button working properly before closing the controller shell.



12. Close the controller bottom, put on the 7 screws then cover the battery pack

back to the place.



13.LED light button (on/off the LED light).



Pasted from <http://www.xcm.cc/wireless_shell_with_led_analog_stick_installation.2.htm>